

[TopPage](#)>>[Search Result](#)>>7303

Angular Contact Ball Bearings

Bearing No. : **NACHI 7303**

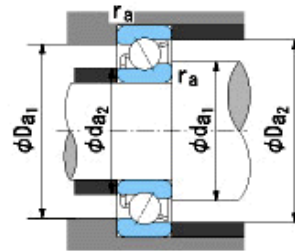
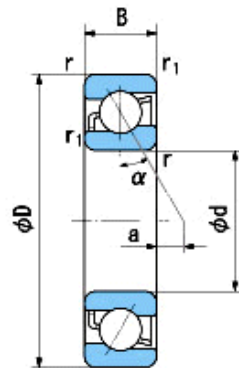
■ Bearing Type

■ Clearance

■ Tolerance Class

Dimensions

$d = 17$ $\begin{matrix} 0 \\ -0.008 \end{matrix}$
 $D = 47$ $\begin{matrix} 0 \\ -0.011 \end{matrix}$
 $B = 14$ $\begin{matrix} 0 \\ -0.120 \end{matrix}$
 $r = 1 \sim 1.5$
 (Radial Direction)
 $r = 1 \sim 3$
 (Axial Direction)
 $r_1 = 0.6 \sim 1$
 (Radial Direction)
 $r_1 = 0.6 \sim 2$
 (Axial Direction)
 $a = 2.2$



Dimensions

$da1(\min) = 23$
 $da2(\min) = 21$
 $Da1(\max) = 41$
 $Da2(\max) = 43.4$
 $ra(\max) = 1$
 $ra1(\max) = 0.6$
 Mass = 0.12 kg

Basic Dynamic Load Rating C_r : **15,900** N
 Basic Static Load Rating C_{or} : **8,650** N
 Limiting Speed ;
 Grease Lubrication : **14,000** min^{-1}
 Oil Lubrication : **19,000** min^{-1}

| | INNER RING | OUTER RING |
|--------------------------------|--------------|--------------|
| O.D.Surface Runout with Side : | | - |
| Axial Runout with Bore : | - | - |
| Axial Runout with Raceway : | - | - |
| Width Variation : | 0.020 | 0.020 |
| Radial Runout : | 0.010 | 0.020 |